



INTRODUCING
CONDOMINIUMS
ORLANDO, FLORIDA

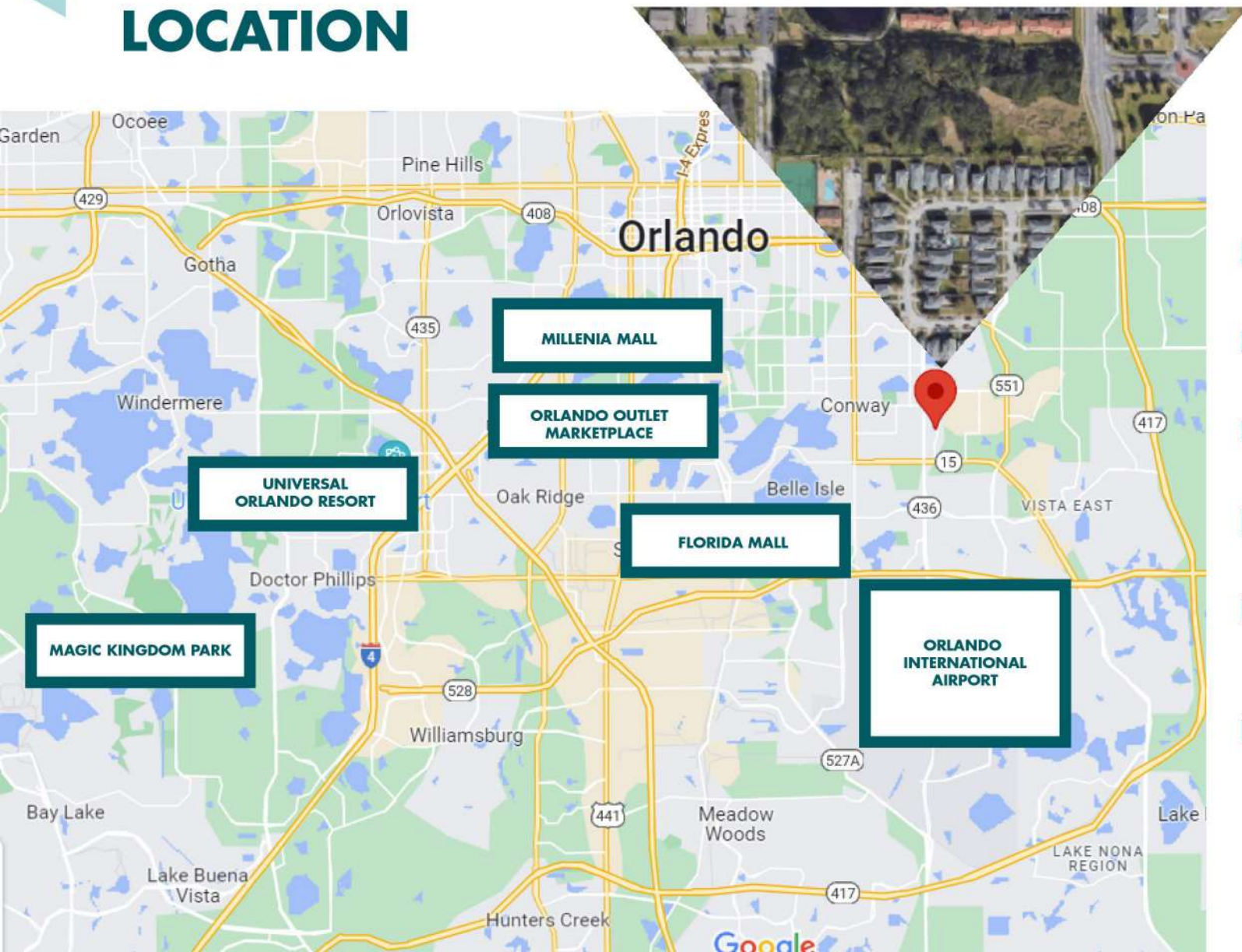
ST.
CHARLES
PRADO
ORLANDO, FL



PRE-CONSTRUCTION
PROJECTED DELIVERY BY FEBRUARY 2024

SUITABLE FOR
SHORT TERM RENTAL

STRATEGIC LOCATION



**5890 St Charles Prado
Orlando, FL 32822**

- ▶ Within the municipal limits of the City of Orlando, FL.
- ▶ 3.7 miles (5 minutes) from Orlando International Airport (MCO).
- ▶ 17.2 miles (25 minutes) from Universal Studios.
- ▶ 27.2 miles (30 minutes) from Magic Kingdom – Disney World.
- ▶ 8 miles (10 minutes) from downtown Orlando and the main Colleges in the region.
- ▶ 44 miles (40 minutes) from NASA Kennedy Space Center.

Condominium **with a variety of amenities**, with **84 apartment units**, all with **two bedrooms and two full bathrooms**, which qualify the administration in the form of short-term rental.

Potential guests are tourists, business visitors, conferences and conventions, and academic visitors.



The construction is expected start at the end of **2022**.

The projected completion is for early **2024**.

Future is here

The area already has additional commercial attractions, gastronomic, tourist and housing.

By the end of 2022, the Express Rail of Brightline Company projects to arrive at the Intermodal Terminal inside the Orlando International Airport, which will complete the trip from Miami to Orlando in about 3 hours.

ST.
CHARLES
PRADO
ORLANDO, FL



ST.
C CHARLES
P PRADO
ORLANDO, FL

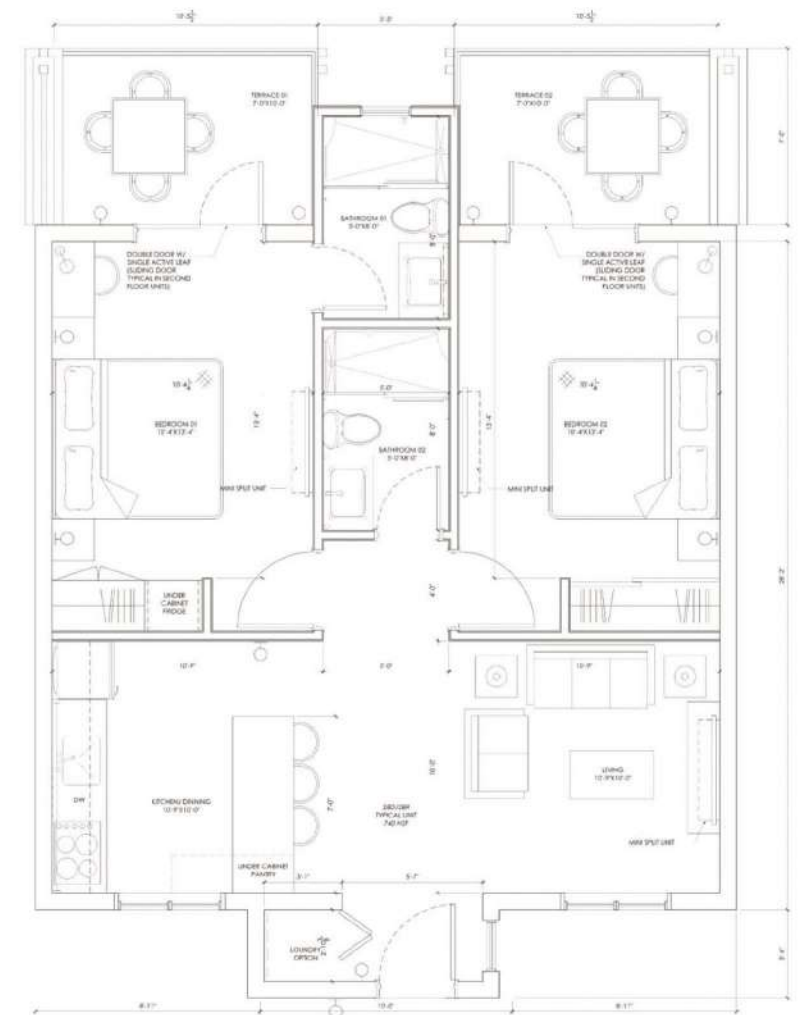


Elevation and floor plan





- ▶ 2 bedrooms and 2 full baths
- ▶ Approximately 70mts² + balconies
- ▶ Full kitchen and laundry



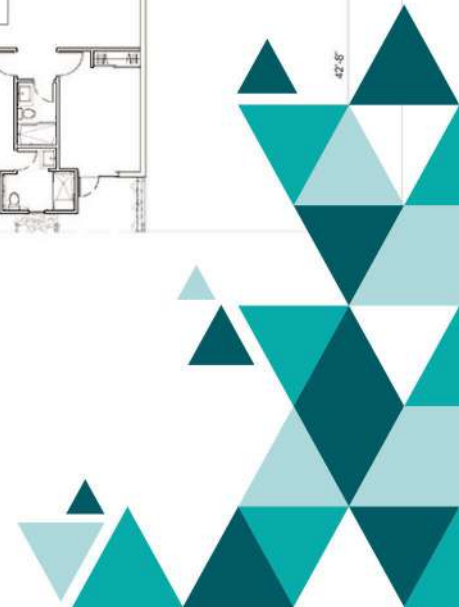
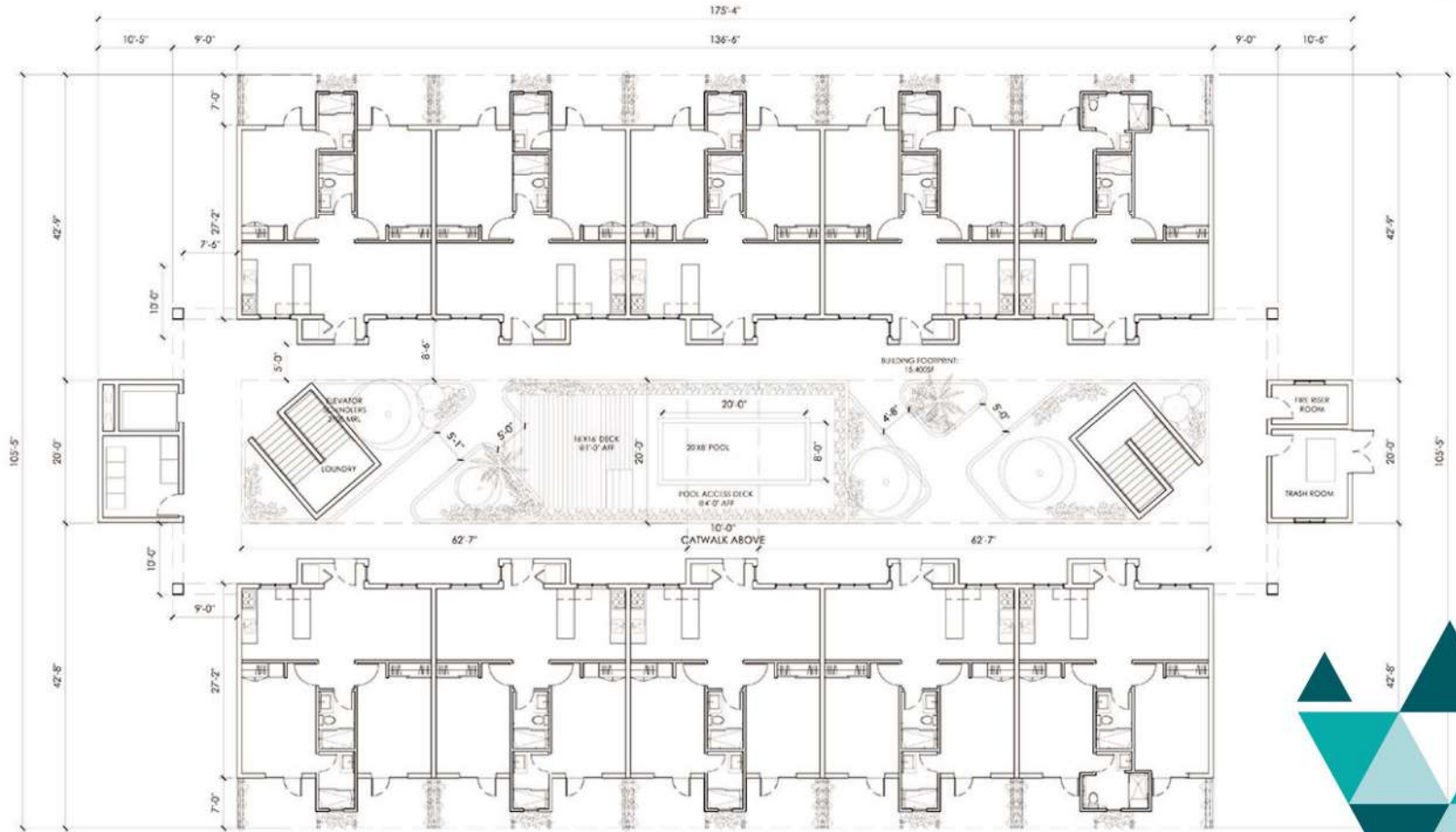
ST.
C CHARLES
P PRADO
ORLANDO, FL



ST.
C CHARLES
P PRADO
ORLANDO, FL



► Interior view of each building



ST.
C CHARLES
P PRADO
ORLANDO, FL

5890 St. Charles Prado
ORLANDO, FL 32822

NOT AN OFFER WERE PROHIBITED BY STATE STATUTES. THE COMPLETE OFFERING TERMS ARE IN A FLORIDA PROSPECTUS AVAILABLE FROM THE DEVELOPER * WE ARE PLEDGED TO THE LETTER AND SPIRIT OF THE US POLICY FOR THE ACHIEVEMENT OF AN EQUAL HOUSING OPPORTUNITY THROUGHOUT THE NATION. WE ENCOURAGE AND SUPPORT AN AFFIRMATIVE ADVERTISING AND MARKETING PROGRAM IN WHICH THERE ARE NO BARRIERS TO OBTAINING HOUSING BECAUSE OF RACE. COLOR RELIGION, SEX, HANDICAP, FAMILIAL STATUS, OR NATIONAL ORIGIN. ALL REAL ESTATE ADVERTISING IS HEREIN SUBJECT TO THE US FEDERAL FAIR HOUSING ACT OF 1968 WHICH MAKES IT ILLEGAL TO MAKE OR PUBLISH ANY ADVERTISEMENT THAT INDICATES ANY PREFERENCE, LIMITATION, OR DISCRIMINATION BASED ON RACE. COLOR, RELIGION. SEX, HANDICAP, FAMILIAL STATUS. OR NATIONAL ORIGIN. PLEASE CHECK WITH YOUR LOCAL GOVERNMENT AGENCY FOR MORE INFORMATION. ORAL REPRESENTATIONS CAN NOT BE RELIED UPON AS CORRECTLY STATING REPRESENTATIONS OF THE DEVELOPER. FOR CORRECT REPRESENTATIONS, MAKE REFERENCE TO THE DOCUMENTS REQUIRED BY SECTION 718 503. FLORIDA STATUTES. TO BE FURNISHED BY A DEVELOPER TO THE BUYER THE SKETCHES, RENDERINGS, PICTURES, AND ILLUSTRATIONS ARE PROPOSED ONLY, AND THE DEVELOPER RESERVES THE RIGHT TO MODIFY, REVISE OR WITHDRAW ANY OR ALL OF THE SAME AT ITS SOLE DISCRETION WITHOUT NOTICE. THE RENDERINGS ILLUSTRATE AND DEPICT A LIFESTYLE, HOWEVER. AMENITIES, FEATURES, AND SPECIFICATIONS ARE SUBJECT TO CHANGE WITHOUT NOTICE. ALL INFORMATION IS DEEMED RELIABLE BUT IS NOT GUARANTEED AND SHOULD BE INDEPENDENTLY VERIFIED. NOTE: PLAN MATERIALS AND SPECIFICATIONS ARE SUBJECT TO ARCHITECTURAL AND OTHER REVISIONS AT THE SOLE DISCRETION OF THE DEVELOPER, BUILDER, OR ARCHITECT OR AS MAY BE REQUESTED BY LAW. FLOOR PLANS MAY NOT BE TO SCALE ANY FURNITURE, APPLIANCES, OR DECORATOR-READY ITEMS DEPICTED HEREIN. THEY ARE SHOWN FOR ARTISTIC AND ILLUSTRATIVE PURPOSES ONLY AND ARE NOT INCLUDED IN THE PURCHASE AND SALE OF THE RESIDENCE STATED. DIMENSIONS MAY BE MEASURED TO THE EXTERIOR BOUNDARIES OF THE EXTERIOR WALL AND THE CENTER LINE OF THE INTERIOR DEMISING WALLS AND, IN FACT, COULD VARY FROM THE DIMENSIONS THAT WOULD BE OF DETERMINED BY USING THE DESCRIPTION AND DEFINITION OF THE "UNIT" SET FORTH IN THE DECLARATION (WHICH GENERALLY ONLY INCLUDES THE INTERIOR AIRSPACE BETWEEN THE PERIMETER WALLS AND EXCLUDES INTERIOR STRUCTURAL COMPONENTS). ALL DIMENSIONS ARE APPROXIMATE AND ALL FLOOR PLANS AND DEVELOPMENT PLANS ARE SUBJECT TO CHANGE. YOU MAY NOT RELY ON ANY ADVERTISING, PICTURES, OR RENDERINGS. FLOORPLANS, DESCRIPTIONS, OR ORAL REPRESENTATIONS TO ENTER INTO A PURCHASE AND SALE AGREEMENT FOR ANY UNIT BUT ONLY ON THE FLORIDA PROSPECTUS AND THE OTHER DOCUMENTS REQUIRED TO BE PROVIDED TO A PROSPECTIVE PURCHASER BY THE DEVELOPER AND ON WHICH THEY RELIED TO MAKE A BUYING DECISION. WE PARTNER WITH A THIRD-PARTY AD NETWORK TO EITHER DISPLAY ADVERTISING ON OUR WEBSITE OR TO MANAGE OUR ADVERTISING ON OTHER SITES OUR AD NETWORK PARTNER MAY USE COOKIES AND WEB BEACONS TO COLLECT NON-PERSONALLY IDENTIFIABLE INFORMATION ABOUT YOUR ACTIVITIES ON THIS AND OTHER WEBSITES TO PROVIDE YOU TARGETED ADVERTISING BASED UPON YOUR INTERESTS. IF YOU WISH TO NOT HAVE THIS INFORMATION USED FOR THE PURPOSE OF SERVING YOUR TARGETED ADS YOU, MAY OPT-OUT BY ADVISING THE DEVELOPER IN WRITING. PLEASE NOTE THIS MAY NOT OPT YOU OUT OF BEING SERVED ADVERTISING AND YOU MAY CONTINUE TO RECEIVE GENERIC ADS.

All room sizes and floorplan measurements are approximate and may vary per unit Floorplans and unit features are preliminary and proposed only Developer reserves the right to: modify revise, change, or withdraw any or all the same in its sole and absolute discretion and without prior notice Depictions of furnishings, finishes, appliances. counters, soffits, coverings, and other matters of detail, including, without limitation. items of finish and decoration are conceptual only and are not necessarily included in each unit @.