

888 BRICKELL MIAMI  
DOLCE & GABBANA

PART I

THE  
MAGIC CITY'S  
TALLEST TOWER



THE GOLDEN CROWN ATOP 888 BRICKELL

ARTIST RENDERING

# YOU'VE ARRIVED

Welcome to 888 Brickell, Miami's  
world-class residences and  
transformative hotel experience.

A Dolce&Gabbana vision created in  
collaboration with JDS Development  
Group and GV Development, with  
architecture by Studio Sofield.



ARTIST RENDERING

THE DOLCE&GABBANA LIFESTYLE STARTS WITH A CINEMATIC PORTE-COCHÈRE THAT BEGINS THE INSPIRING EXPERIENCE OF 888.

# A RESIDENTIAL AND HOTEL EXPERIENCE FOR DYNAMIC LIVING

Every aspect of the tower is designed with owners' lifestyles in mind. Fluid floorplans allow residences to transform into high-style hotel suites with utmost service and discretion.

DUPLEX GREAT ROOM IN TRAVERTINO GIALLO

ARTIST RENDERING

# IMMERSIVE EXPERIENCES OF OPTIMISM AND AWE

Highly considered fine materials combined with world-class service are core to Dolce&Gabbana excellence. At 888 Brickell, discerning tastes and desires are catered to with the brand's unique finesse — offering amenities such as custom tailoring and private culinary experiences.

## A WORLD OF POSSIBILITY THROUGH A PIONEERING COLLABORATION



DOLCE&GABBANA

888 Brickell is the feat of a team united in their commitment to creating enduring emotional experiences through the power of design.

Dolce&Gabbana is a world that merges style and substance, rooted in an elevated lifestyle. Curated details of refinement harmonize to create timeless allure in everything they touch.

Dolce&Gabbana, JDS Development Group, and GV Development have brought their distinct expertise to the Miami stage. This unique collaboration serves to crown Miami in gilded glamour.

With 888 Brickell, the inherent style of Miami is brought to life in a way only the Italian designers can deliver.

JDS Development Group, headquartered in Miami, saw the immense opportunity to create a large-scale project that was more than a building, but a monument to reflect the city.



JDS DEVELOPMENT



# DOLCE&GABBANA



The Italian luxury lifestyle brand offers an all-encompassing experience that embraces the style of living well.

Their love of craftsmanship, fine fabrics, and defining details are interwoven with the idea that life should be lived with passion and gratitude.

This philosophy extends to the home, inviting a sense of appreciation for the beauty you live within.

Similarly, in their Real Estate endeavors, Dolce&Gabbana creates residential experiences that blend the elegance of fashion with the warmth of Italian hospitality.

Designer furniture, fine materials, and exquisite accessories transform spaces into sensorial havens of luxury and comfort.

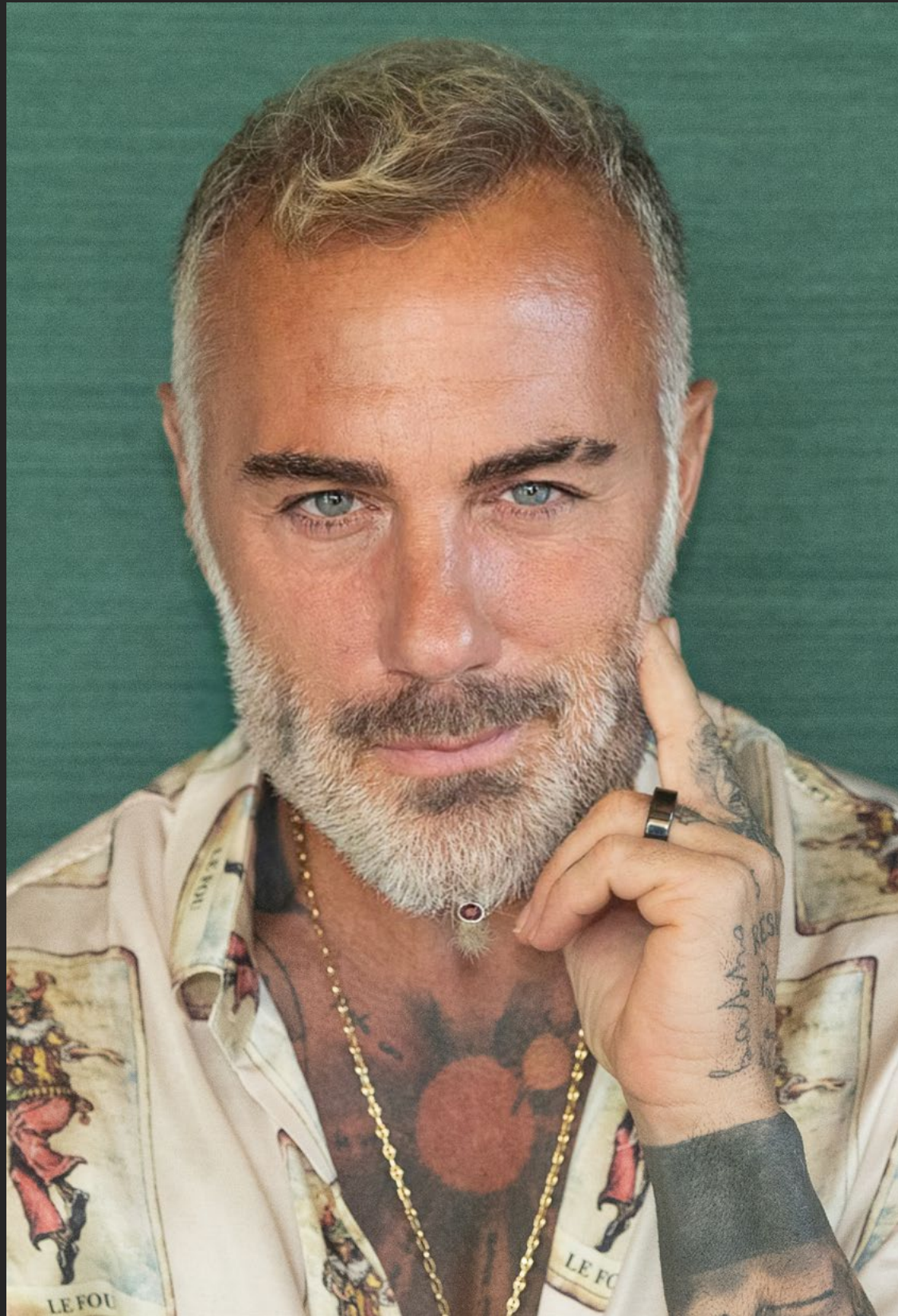
# JDS DEVELOPMENT



Known for best-in-class engineering and record-breaking architecture around the world, JDS Development Group brings its breadth of experience to Miami, the home of its headquarters. The difference comes from responding to each community and pushing the boundaries of engineering and design.

Composed of a team of innovators and builders led by founder and visionary Michael Stern, JDS is an expert in large-scale urban development that constantly pushes the boundaries of engineering and design, disrupting the skyline as often as they break ground.

# GV DEVELOPMENT



GV Development Group is the US real estate division of Cofiva Holding, owned in full by Gianluca Vacchi--visionary entrepreneur, DJ and social media star, commanding over 47 million followers. Gianluca Vacchi has joined many entrepreneurial initiatives in 15 different sectors, including several listed on the Milan Stock Exchange. Recently, he sold his stake in the family company Ima Group, after a tremendous period of growth following his entrance, from 100 million in

sales to 2.8 billion dollars in sales--making it a worldwide leader in packaging machinery. Gianluca Vacchi became a social media sensation through his energy and personal embodiment of a unique, personal lifestyle. Gianluca Vacchi is the founding principal at GV Development Group, which is quickly making a major impact on US real estate. He maintains a Miami residence and is passionate about the magic city's bright future.

# STUDIO SOFIELD

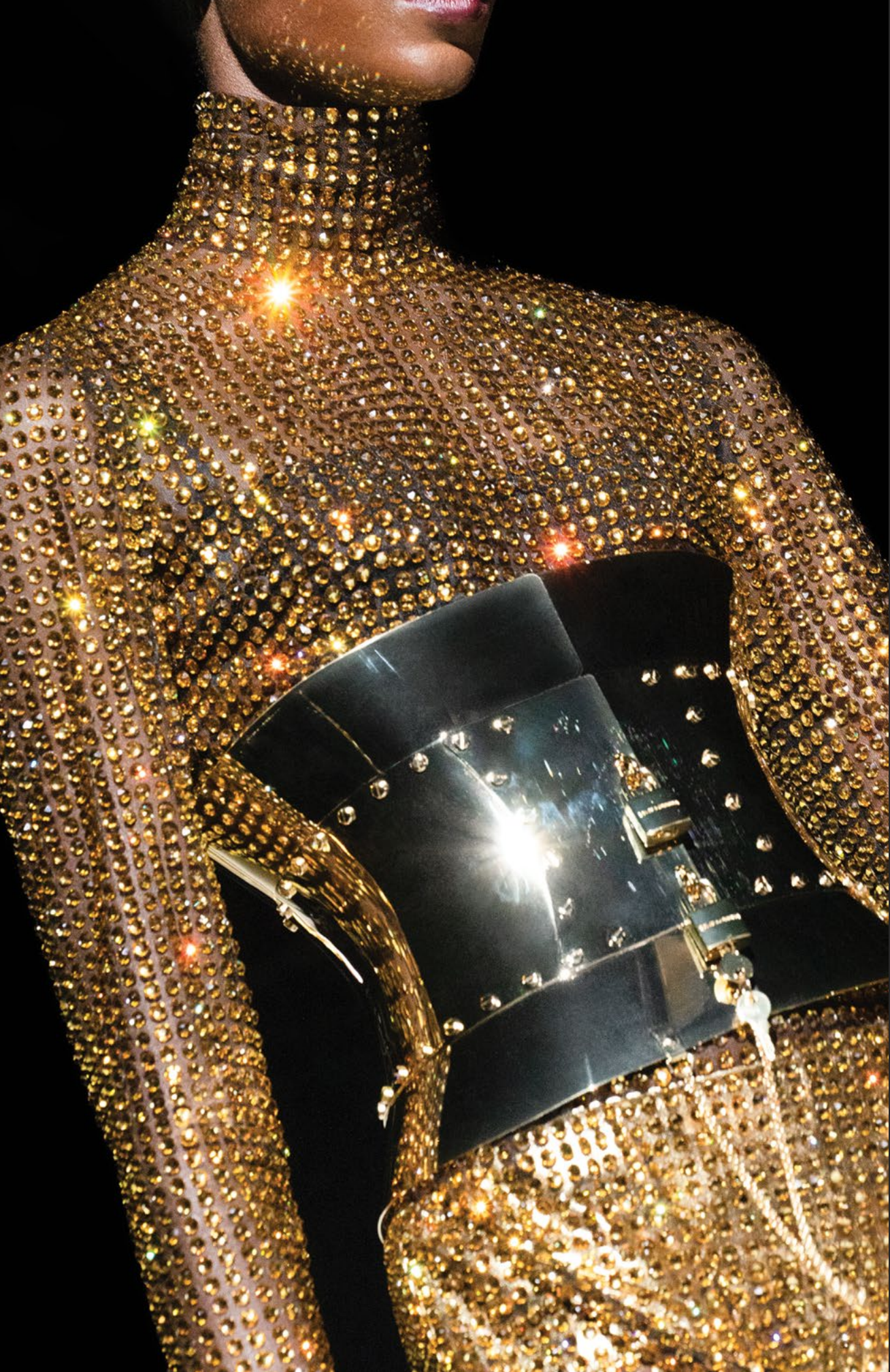


When William Sofield entered the design profession, he envisioned a workshop dedicated to both creative relationships with clients and prolific collaborations with artisans and artists.

This commitment has defined the legacy of Studio Sofield, an

interdisciplinary firm distinguished for the clarity, quality, and wit of its projects.

With an astute eye to each client's needs and tastes, William Sofield creates beautiful and functional solutions united by a focused artistic concept.



DOLCE&GABBANA F/W 23

THE CROWN OF THE BUILDING



PART II

HONORING  
THE LIMITLESS  
POSSIBILITY  
OF MIAMI



## A DESTINATION FOR THE NEW ROMANTICS

Miami, always The Magic City, is in a truly definitive moment. Bursting with business opportunities, a thriving global community, and fresh cultural energy — it's increasingly known as a destination for the creative and curious.

Now, it's home to 888 Brickell.

RESIDENCE LOGGIA

ARTIST RENDERING



# A CULTURAL ICON FOR MIAMI

Always a city for global cultural growth, 888 Brickell invites Miami to fully revel in the Dolce&Gabbana lifestyle.

888 Brickell is ideally located at the center of Miami's thriving Brickell neighborhood, with access to all this magical city has to offer, from fine dining, cultural institutions,

high-end shopping, and the business district.

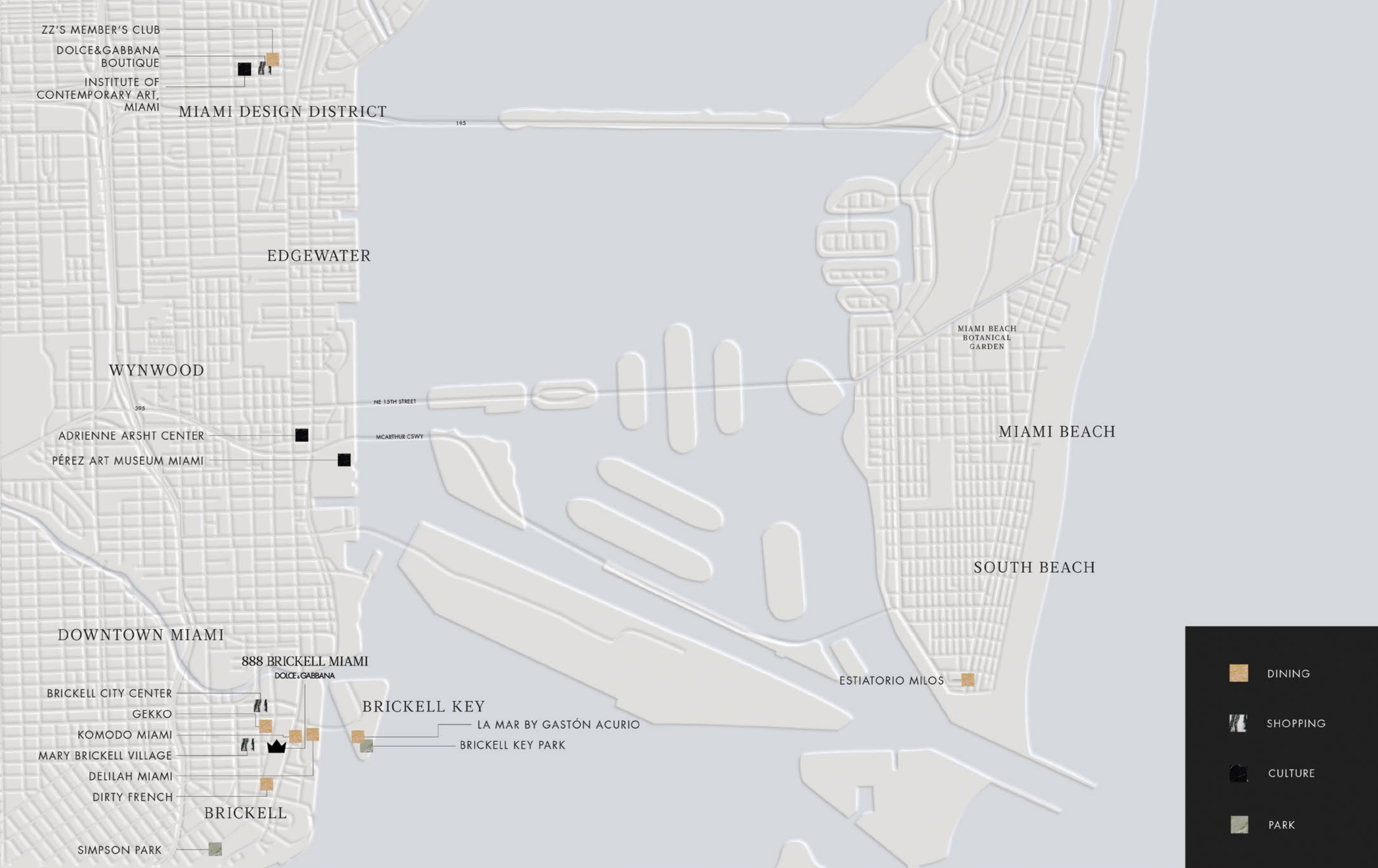
Complementing the cityscape surrounding 888 are Miami's natural elements including Biscayne Bay, South Beach, and numerous parks, which when considered together, create the ultimate cosmopolitan living experience.





RESIDENCE LOGGIA

ARTIST RENDERING



ZZ'S MEMBER'S CLUB  
DOLCE&GABBANA  
BOUTIQUE  
INSTITUTE OF  
CONTEMPORARY ART,  
MIAMI

MIAMI DESIGN DISTRICT

EDGEWATER

WYNWOOD

ADRIENNE ARSHT CENTER  
PÉREZ ART MUSEUM MIAMI

DOWNTOWN MIAMI

888 BRICKELL MIAMI  
DOLCE & GABBANA

BRICKELL CITY CENTER  
GEKKO  
KOMODO MIAMI  
MARY BRICKELL VILLAGE  
DELILAH MIAMI  
DIRTY FRENCH

BRICKELL

SIMPSON PARK

BRICKELL KEY





LA MAR BY GASTÓN ACURIO  
BRICKELL KEY PARK

MIAMI BEACH  
BOTANICAL  
GARDEN

MIAMI BEACH

SOUTH BEACH

ESTIATORIO MILOS

-  DINING
-  SHOPPING
-  CULTURE
-  PARK

888 BRICKELL NEIGHBORHOOD MAP



DOLCE&GABBANA MEN'S F/W 23

AN ARCHITECTURAL PLAY OF LIGHT AND SHADOW



PART III

A DEDICATION  
TO AWE-INSPIRING  
ARCHITECTURE



888 BRICKELL MIAMI

ARTIST RENDERING

# UNMATCHED ARCHITECTURAL INTEGRITY

888 is an architectural landmark holistically designed for lasting impact.

Creating the tallest tower has robust intention. Here, with a facade designed by renowned architect William Sofield, the exterior of the tower invites a new appreciation for beauty in Miami.

Clad in limestone, a material that stands the test of time, with sculptural elements complemented by crisp black verticality that draws the eye upward.

This is an ode to the power of permanence.

This is a living dedication to the future of Miami.



TRAVERTINE FACADE  
ARTIST RENDERING



A facade of Roman travertine exudes a timeless elegance that has adorned many of the world's most iconic buildings.

Combined with bas-relief beams, the building has an expressly vertical appearance, setting it far apart from its neighbors, standing at an awe-inspiring 1,049 feet tall.

A BUILDING  
TO BEHOLD

DESIGN WITH  
IMPACTFUL

EMOTION

THE MEETING

OF FUNCTION

AND FASHION

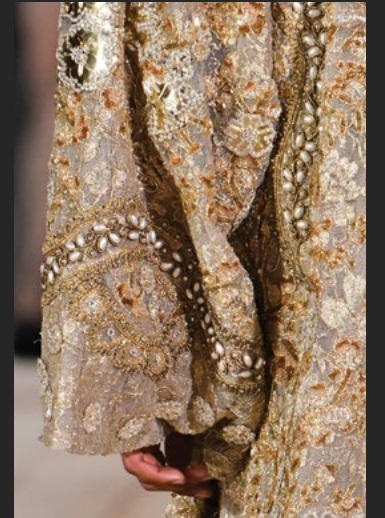


# EVERYTHING FATTO A MANO

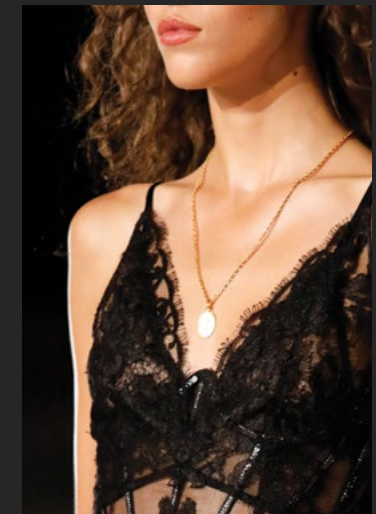
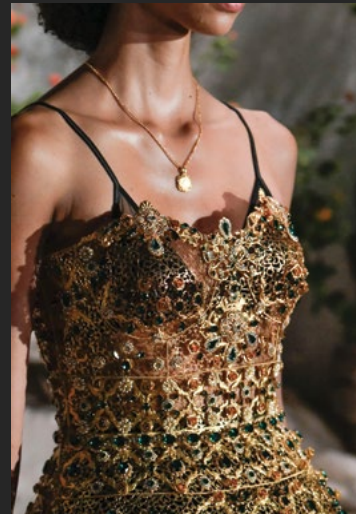
Designed with the discerning eye of Dolce&Gabbana, the tower and each of its residences embody the spirit of Italian craftsmanship known as Fatto a Mano.

By employing the finest materials and furnishings, enlisting the talents of Italian artisans, and hand-crafting each element of 888, Dolce&Gabbana is creating a living experience that elevates the everyday.





DOMENICO DOLCE AND STEFANO GABBANA  
SHARE A RELENTLESS DEDICATION TO STYLE,  
CRAFTSMANSHIP, AND AN EYE FOR DETAIL.  
A PASSION FOR CREATIVITY AND  
IMAGINATION IS THE BASIS OF THEIR  
ENDURING VISION OF FASHION.





DOLCE&GABBANA F/W 23

THE PORTE COCHÈRE



PART IV

RESIDENCES  
FOR A LIFE  
OF STYLE,  
AND A STYLE  
OF LIFE

## INSPIRED BY THE IMPORTANCE OF HOME IN ITALIAN CULTURE, DOLCE&GABBANA RESIDENCES INVITE A LIFE OF INSPIRATION

Building on their legacy of Italian craftsmanship, the pioneering designers Domenico Dolce and Stefano Gabbana translate their world of gilded glamour into world-class residences in Miami. No detail is too minor, and no expression is too grand.

Each residence inspires individuals to live without compromise. Every occupant is encouraged to embrace a lifestyle with ebb and flow, facilitated by pioneering fluid floorplans that enhance a modern lifestyle.



# GREAT ROOM

Designed by Dolce&Gabbana

## FEATURES

Turnkey Residences Styled by  
Dolce&Gabbana

Ceiling heights up to 11 feet tall

Grand Living Rooms opening to  
Private Outdoor Space\*

Custom 888 building app with  
smart home technology

House phones and interface  
technology for concierge  
and services

Miele Washer and Dryer

DUPLEX GREAT ROOM IN SAHARA NOIR MARBLE

ARTIST RENDERING

\* IN SELECT RESIDENCES



DUPLEX GREAT ROOM IN CAMELIA GREEN MARBLE

ARTIST RENDERING





DUPLEX GREAT ROOM IN TRAVERTINO GIALLO

ARTIST RENDERING



# CUSTOM KITCHEN

Designed by Dolce&Gabbana

## FEATURES

Fully-integrated Sub Zero  
Refrigerator and Freezer

Sub Zero Wine Cooler\*

Fully-integrated Miele Dishwasher

Wolf Induction Cooktop and Vent

Wolf Stainless Steel Speed Oven\*

Wolf Stainless Steel Oven

Wolf Warming Drawer

XO Sink Disposal

\* IN SELECT RESIDENCES

KITCHEN IN SAHARA NOIR MARBLE

ARTIST RENDERING



KITCHEN IN CAMELIA GREEN MARBLE

ARTIST RENDERING



KITCHEN IN COVELANO MACCHIA VECCHIA MARBLE

ARTIST RENDERING



# PRIMARY BATHROOM

Custom bathrooms designed  
by Dolce&Gabbana

BATHROOM IN SAHARA NOIR MARBLE

ARTIST RENDERING



BATHROOM IN TRAVERTINO GIALLO

ARTIST RENDERING



BATHROOM IN COVELANO MACCHIA VECCHIA MARBLE

ARTIST RENDERING



# PRIMARY SUITE

Designed by Dolce&Gabbana

## FEATURES

Fully built-out closets in  
custom millwork

Lockable owner's closets  
in primary suite

PRIMARY SUITE IN SAHARA NOIR MARBLE

ARTIST RENDERING

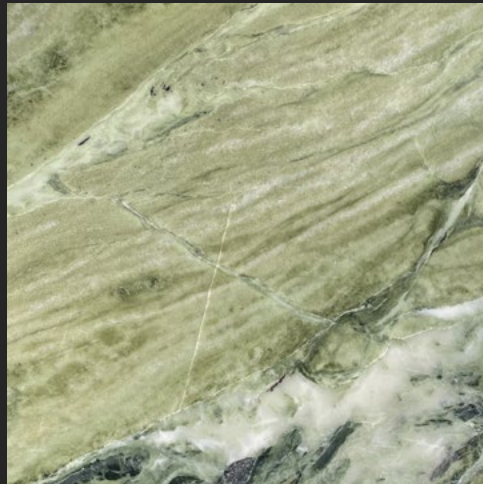




PRIMARY SUITE IN TRAVERTINO GIALLO

ARTIST RENDERING

# A CORE BELIEF THAT MATERIALS MATTER



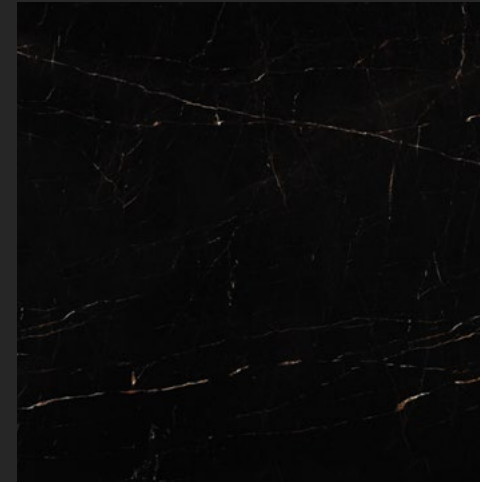
CAMELIA GREEN

A prosperous hue that harmonizes with the most magical parts of nature, creating a seductive contrast of organic indulgence.



TRAVERTINO GIALLO

Used by the Romans and sourced from the finest quarries in Italy, this is a material that makes any moment feel monumental.



SAHARA NOIR MARBLE

A marble evoking the cosmos, its strength in both style and material creates a sense of gravitas not typically seen in the home.



COVELANO MACCHIA VECCHIA

A magical combination of light and dark creates a romantic sense of drama that allows you to feel immersed in the finest of history, at home.

Hand selected materials from around the world elevate the every day while having the power of permanence. Every detail was hand-selected to invoke awe today while standing the test of time.

# RESIDENTIAL FLEXIBILITY, TAILORED TO YOU

Unique to 888 Brickell and designed for flexibility, homes seamlessly transition between a grand private residence, a corner hotel suite, and a high-style hotel room.

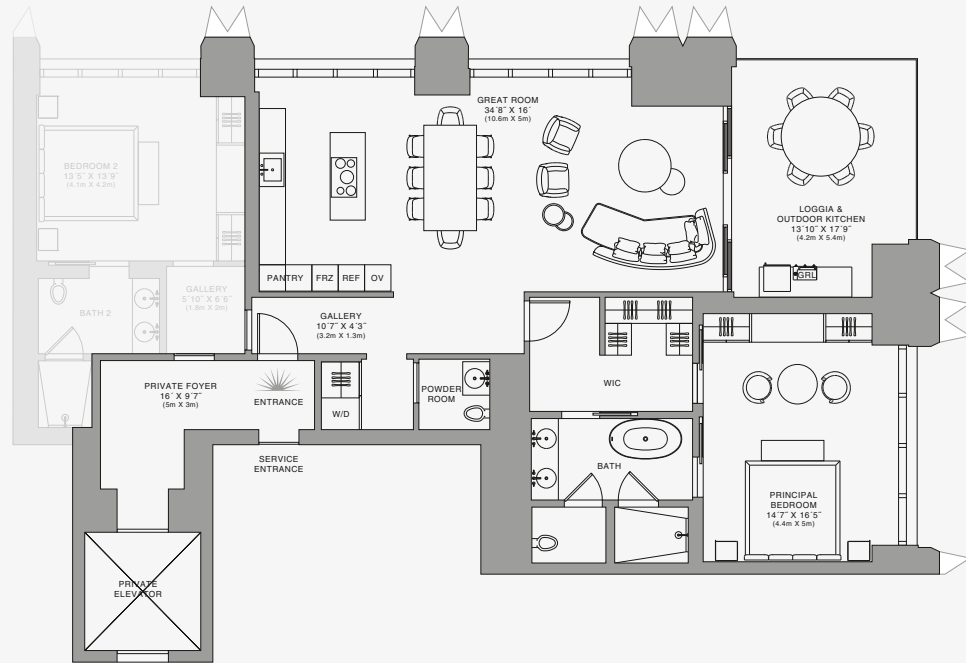
This is a defining feature of ownership at 888, inviting the ability for your residence to be tailored to your lifestyle.

At 888, residents receive world-class hotel hospitality around the clock, along with exclusive amenities.

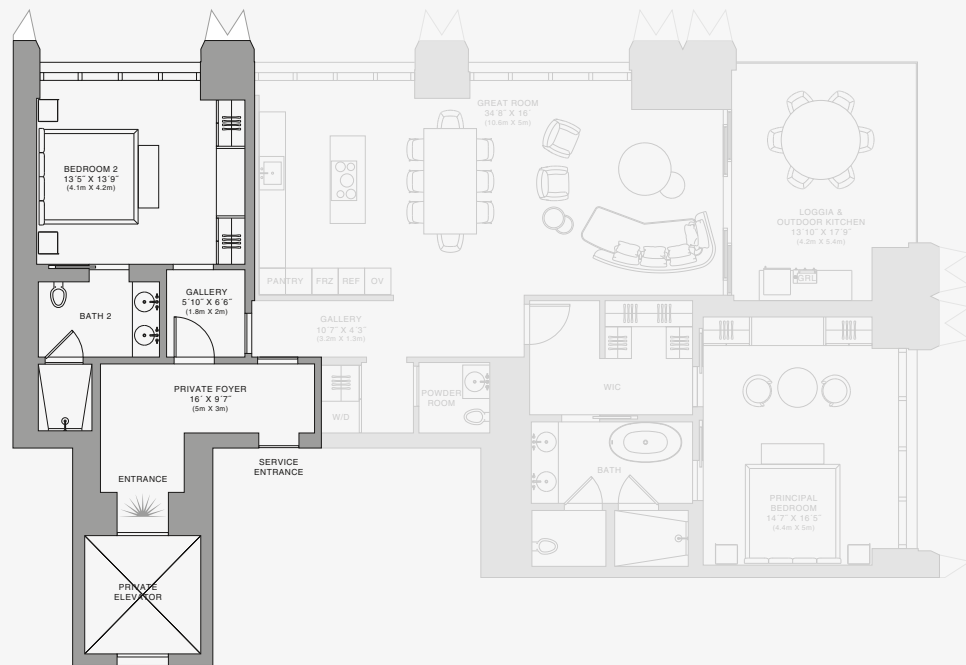
Resident privacy is of utmost priority. State-of-the-art sound-proofing and private entrances allow each resident to retain their discretion when hotel guests are enjoying the rooms and suites.

DUPLEX GREAT ROOM IN COVELANO MACCHIA VECCHIA MARBLE

ARTIST RENDERING



Dolce&Gabbana Hotel Suite



Private Dolce&Gabbana Hotel Room

## YOUR HOME SEAMLESSLY TRANSITIONS TO HOTEL SUITE(S)

FLEXIBLE FLOORPLANS, DESIGNED FOR YOUR LIFESTYLE.  
A DEDICATION TO DISCRETION, AS RESIDENTS REQUIRE.

### GRAND PRIVATE RESIDENCE:

The Dolce&Gabbana residence in its grandest form, two ensuite Bedrooms plus a Powder Room live graciously with a corner Great Room extending to a generous Loggia with Outdoor Kitchen.

### DOLCE&GABBANA HOTEL SUITE:

With the Secondary Bedroom transitioned into a high-style hotel room, the Primary Bedroom and Great Room with Loggia become an intimate private residence or hotel suite.

### DOLCE&GABBANA HOTEL ROOM:

With a separate entrance from the private foyer, this thoughtfully conceived hotel room is a world of its own in Dolce&Gabbana splendor, independent of the corner suite.



DOLCE&GABBANA F/W 23

THE TRAVERTINE FACADE OF 888 BRICKELL



PART V

# A WORLD OF AMENITIES



## FIVE-STAR AMENITIES FOR MULTI-FACETED LIFESTYLES

888 Brickell is designed to cater to you with world-class hotel hospitality. With a suite of offerings across categories, we have ensured anything you may need or desire is available immediately.

In addition to the amenities available to hotel guests, residents have private facilities and services that retain the same discretion as experienced in your home.



THE DG POOL CLUB

ARTIST RENDERING





LOBBY

ARTIST RENDERING



EVENT SPACE

ARTIST RENDERING



## AMENITIES

### WELLNESS

Indoor Padel Court  
Fitness Center  
Yoga and Pilates  
Cold and Hot Plunge Pools  
Recovery Spa and Juice Bar  
Massages and IV Therapy  
Salon and Barber Shop  
Tailor Shop

### EVENT SPACE

5,000 SF Event Space with Stage  
Chef's Kitchen and Private Dining  
Wine Cellar  
Bar and Lounge  
Theater  
Dolce&Gabbana Salon  
by Appointment

### THE DG POOL CLUB

3,800 SF Pool  
Gelateria Italiana  
Grand Pool Bar with  
Poolside Service  
Pool Deck Restaurant  
Private Cabanas with  
Shade Devices

### ARRIVAL & LOBBY

Porte Cochere Arrival  
Rolls Royce House Car and Valet  
Signature Restaurant  
Double-Height Grand Lobby

### FOOD & BEVERAGE

Signature Restaurant  
Pool Club Restaurant and Bar  
Chef's Kitchen



SECOND FLOOR LOUNGE

ARTIST RENDERING



## RESIDENT-ONLY LUXURIES

At 888 Brickell, amenities are intended to be an extension of your home.

In addition to the outdoor pool club, a 44-foot lap pool is reserved strictly for residents.

A tailor and barber are available at a moment's notice.

A theater room and a billiards and game room await to entertain you and your guests.

Lounges, meeting suites, creative workspaces, office space, and children's playroom allow you to work from home with the highest quality facilities.

PART VI

PURSUE  
THE POSSIBILITY

An aerial view of a city skyline at dusk. The sky is a mix of orange, pink, and purple. A prominent skyscraper, the 888 Brickell Miami, stands out in the center, illuminated from within. Other buildings of varying heights surround it, some also lit up. The city lights create a dense pattern of small lights across the horizon.

# STYLE AND SUBSTANCE WITH ENDLESS POSSIBILITIES

With 888 at the forefront, Miami is poised to be the epicenter of opportunity. A residence in the tower signifies a position of influence. Of being at the right place, at the right time, where possibility is endless.

888 BRICKELL MIAMI  
ARTIST RENDERING